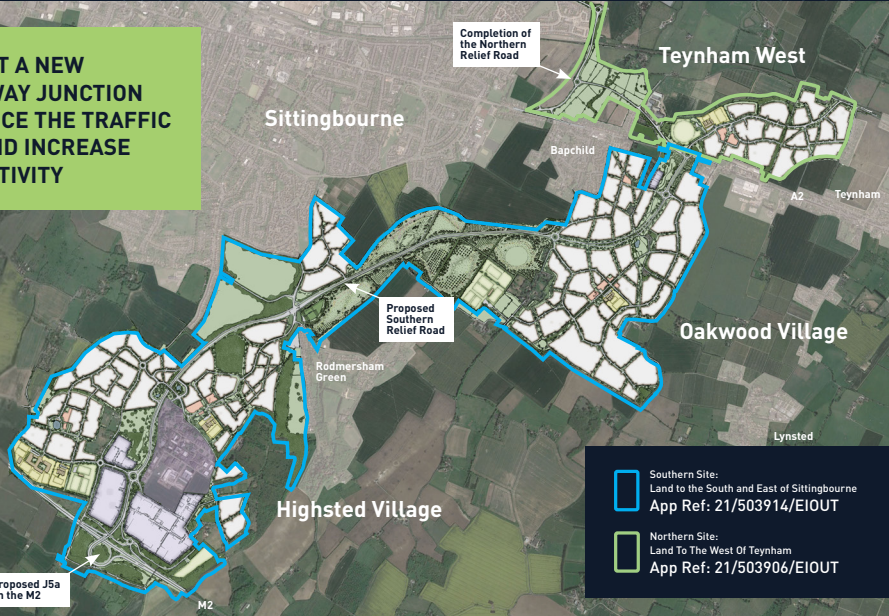




Highsted Park

A VISION FOR A HIGHLY SUSTAINABLE MIXED-USE COMMUNITY IN SITTINGBOURNE

SUPPORT A NEW MOTORWAY JUNCTION TO REDUCE THE TRAFFIC JAMS AND INCREASE PRODUCTIVITY



A VISION FOR A HIGHLY SUSTAINABLE MIXED-USE COMMUNITY IN SITTINGBOURNE

Quinn Estates, in partnership with Kent Science Park and a consortium of local landowners, are driving forward a mixed-use development that incorporates game-changing infrastructure for the residents and businesses of Sittingbourne and Swale.

Are you fed up with sitting in huge traffic jams at J5 on the M2, A249 and Sittingbourne town centre?

The Highsted Park proposal has stemmed from solving the significant issues businesses and local people like you face around strategic transport infrastructure facing Sittingbourne and Swale.

With land already secured, the proposal involves the building of a new junction on the M2, this will be Junction 5a, and the creation of a Southern Relief Road in conjunction with the completion of the Northern Relief Road to provide a fully functioning road network.

As a piece of infrastructure of local, regional and national importance there are huge benefits to job creation, air quality, housing delivery, road functioning and the economic success of the area.

The proposal at Highsted Park has been designed to meet the growth aspirations of Swale through the delivery of an exemplar and sustainable mixed-use community including much needed new homes, delivered over a 30-year period.



Reduce carbon emissions



Reduce harmful particulates in the air



Reduce average journey times making business more efficient



Improving air quality across the town

HIGHSTED PARK: DELIVERING A SUSTAINABLE FUTURE FOR SWALE

- The delivery of J5a on the M2 which will relieve pressure on the congested J5 meaning less time sitting in traffic, better quality of life and increased productivity at work
- The delivery of the southern Relief Road connecting the A2 to the M2
- The completion of the Northern Relief Road which will allow businesses including those at Eurolink to access the M2 without contributing to congestion at J5 and in the town centre
- Crucially through land value capture, these infrastructure gains are funded by Highsted Park and will be delivered in the first phase, providing the first privately funded new junction onto the Strategic Road Network
- New facilities for the community including primary and secondary education
- 815 acres of publicly accessible open space and country parks
- 20% biodiversity net gain
- New medical facilities
- The delivery of low and zero-carbon new homes with 8,000 south of the A2 and 1,250 north of the A2
- Policy compliant affordable housing (1,850 affordable homes) with self-build opportunities
- Extension of Kent Science Park to provide an additional 170,000 sq.m of new floorspace, creating 8,000 new jobs in a range of sectors and across a range of skill levels
- Thousands of construction jobs over the course of the project including opportunities for apprenticeships
- A new state-of-the-art sports hub anchored by Sittingbourne FC
- A development, that through implementing the latest green technology including battery storage, can lead the way in sustainable development



Less time sitting in traffic with game changing transport infrastructure



Creation of a wide range of jobs for the entire community



Supporting the housing crisis with delivery of new homes



Supporting the transition to a low carbon economy

An example email, as set out here, is available via the QR Code below, but please feel free to amend however you wish should you wish to make a comment on the application.



Comments can be lodged at the email address below with the relevant reference numbers.

planningcomments@midkent.gov.uk
21/503906/EIOUT
21/503914/EIOUT

Dear Planning Officer

I support the proposals at Highsted Park which will bring a number of benefits to Sittingbourne and Swale.

The proposals will help to:

- Alleviate traffic with the creation of a new motorway junction
- Create a wide range of jobs for the entire community
- Support the housing crisis with delivery of affordable homes
- Support the transition to a low carbon economy.

My contact details are below:

NAME:

ADDRESS:

EMAIL: